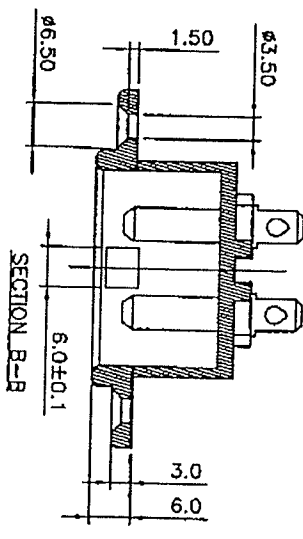
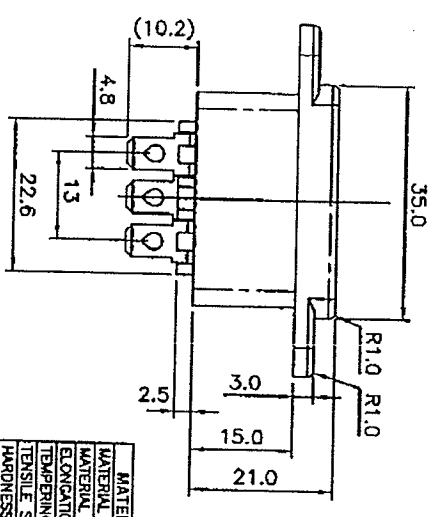
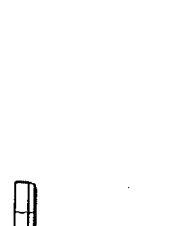
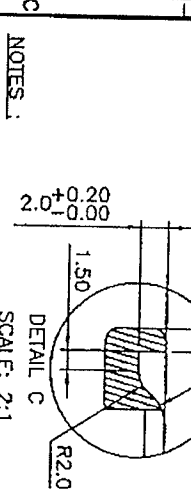
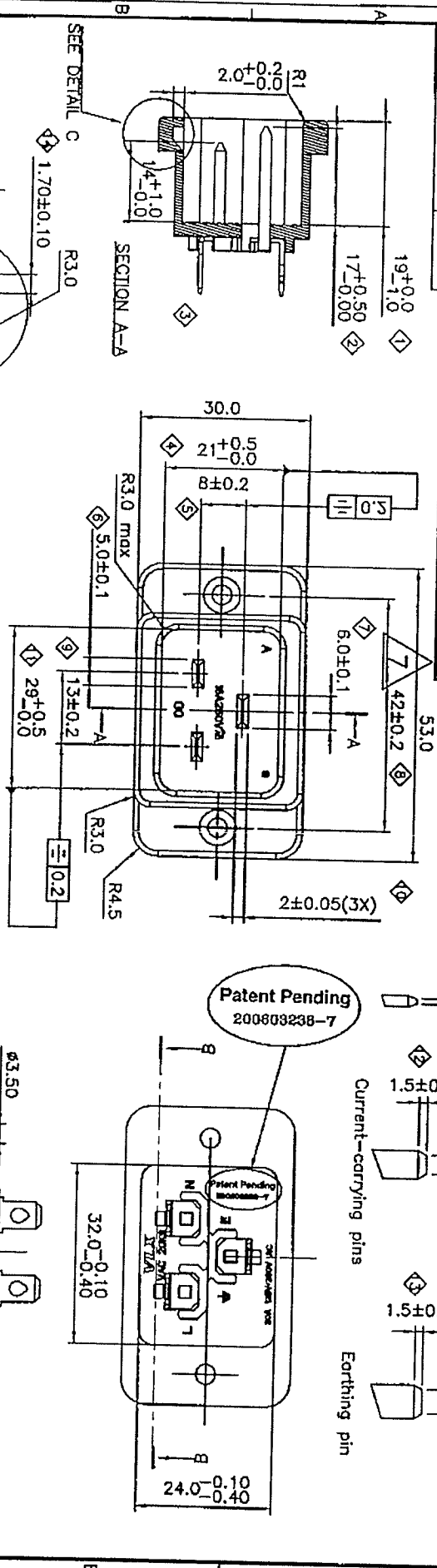


DRAWING NUMBER : MP-XXXXX
 REVISION : 7

ENGINEERING DETAILS



- NOTES :
1. ALL DIMENSION IN MM.
 2. GENERAL TOLERANCE, UNLESS OTHERWISE SPECIFIED :
 LINEAR : XX = ±0.2 ANGULAR : X = ±3°
 : XXX = ±0.15 : XXXX = ±0.050
 3. CRITICAL DIMENSIONS, WHERE Y IS IN NUMERICAL DIGITS.
 : YXX = ±0.050
 4. CRITICAL POINTS, WHERE Z IS IN ALPHABETICAL ORDER.
 : ZXX = ±0.050
 5. (SBO) POINTS.
 6. MAX. 0.20MM ALLOWABLE PLASTIC FLASH ALL ROUND.
 7. MAX. 0.05MM ALLOWABLE METALLIC BURR ALL ROUND.
 8. EVERY LOT MUST COME WITH COC DECLARING THE SUPPLIER AND TYPE NUMBER OF THE MATERIAL USED.

REV	NPD/ECR	BY	DATE	REV	NPD/ECR	BY	DATE	TITLE
1	PS028-06	XIA	20/08/06	5	PS028-06	XIA	19/10/06	VOLEX VAC2DKS INLET(PS028-06)
2	PS028-06	XIA	15/09/06	6	PS028-06	XIA	20/10/06	STANDARD CONFORMANCE :
3	PS028-06	XIA	28/09/06	7	PS028-06	JIA	16/11/06	IEC 320 C20
4	PS028-06	XIA	17/10/06					

MATERIAL SPECIFICATION (CONTACTS)		MATERIAL SPECIFICATION	
MATERIAL	TIN PLATED BRASS	MATERIAL	PBT
MATERIAL No.	C2890R	COLOUR	BLACK
ELONGATION	-	FINISHING	-
TENSILE STRENGTH	38~45Kgf/mm ²	MATERIAL No.	PBT-4130
HARDNESS VALUE	1/2H	UL LICENSE No.	ES9491
PLATING THICKNESS	3~5um	PURVISIBILITY	UL94V-D
		SUPPLIER	CHANG CHUN

Voilex
 Confidential property of Voilex. Information contained herein shall not be disclosed, reproduced or used in any other manner without the prior written consent of Voilex.